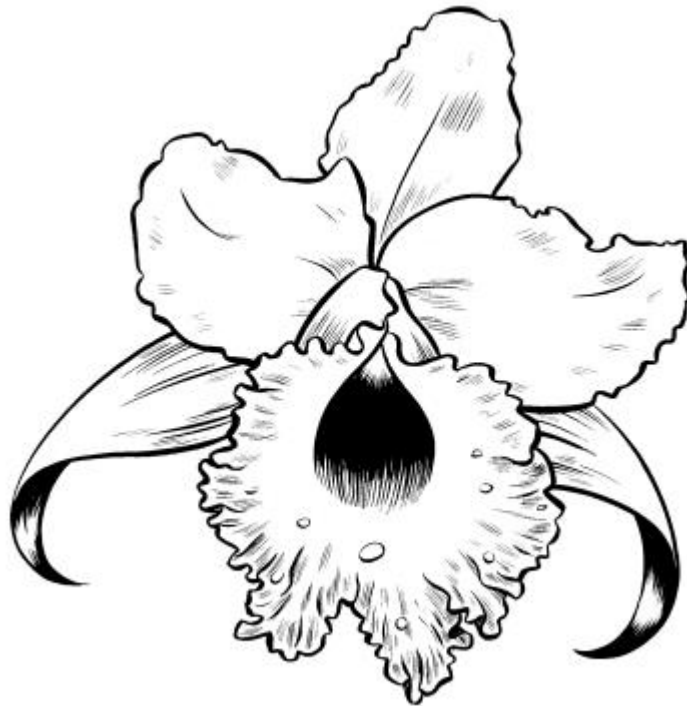




# The Windsor Orchid Society Orchid Show and Sale "Spooktacular"

**Gethsemane Lutheran Church**  
1921 Cabana Road, West, Windsor, ON N9G 1C7

**October 28<sup>th</sup> & 29<sup>th</sup>, 2023**





**WINDSOR ORCHID SOCIETY  
Eighth ANNUAL ORCHID SHOW**

October 28-29, 2023

**Gethsemane Lutheran Church**

1921 Cabana Road, West, Windsor, ON N9G 1C7

**SCHEDULE OF EVENTS**

Friday, October 27, 2023

12:00 p.m.	Setup for sales and displays begins and Plant registration opens (no earlier please)
6:00 p.m.	Food and Refreshments
8:00 p.m.	Registration closes
9:00 p.m.	Setup ends and building is secured

Saturday, October 28, 2023

7:15 a.m.	Judges' and clerks' light breakfast
8:00 a.m.	Ribbon judging starts AOS judging starts after ribbon judging
11:00 a.m.	Exhibit and Sales areas open to public
Noon – 1:00 p.m.	Judges' luncheon
1:00 p.m.	AOS judging resumes
5:00 p.m.	Show closes; building is secured
6:30 p.m.	Optional dinner for participants (each participant responsible for their own bill)

Sunday, October 29, 2023

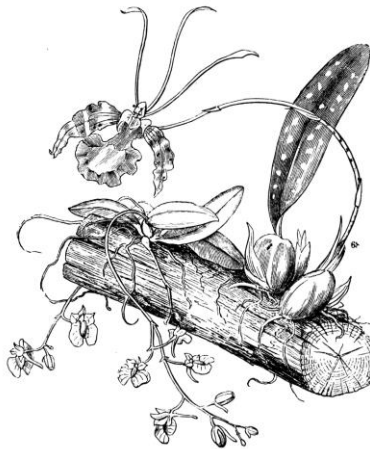
9:00 – 11:00 a.m.	Photographers' Session and Workshop
11:00 a.m.- 4:00 p.m.	Show and sales open to public
1:30 p.m.	Re-potting Orchids
4:15 p.m.	Takedown (when announcement is made)

**2022-23 WINDSOR ORCHID SOCIETY  
Executive**

President	Vacant
Vice President	Renee Gignac
Past President	Deb Boersma
Secretary	Michelle Paterson
Assistant Secretary	Felicia Cheng
Treasurer	Kathleen Fekete

**2023 SHOW COMMITTEE**

Show Chair	Deb Boersma
Vice Chair	Ed Cott
Judging Chair	Joyce Medcalf
Judging and Clerking Liaison	Ed Cott
AOS Photographer	Ed Cott
Venue Liaison	Ed Cott and Scott Hitchen
WOS Exhibit	Renee Gignac
Show Treasurer	Kathleen Fekete
Hospitality	Gail Reisch
Information Table/Membership	Michelle Paterson
Ribbons and Awards	Kathleen Fekete
Registration and Website	Adele Beitler
Publicity Chair	Deb Boersma
Fund-Raising Chair	Deb Boersma
Staging	Scott Hitchen/Ed Cott
Vendor and Exhibitor Liaison	Ed Cott



## SHOW RULES AND REGULATIONS

1. The Windsor Orchid Society (WOS) Show will be held at Gethsemane Lutheran Church, in Windsor, Ontario on October 28-29, 2023. Exhibitor and Vendor set up will take place on Friday, October 27, 2023 starting **no earlier** than 12 noon.
2. Exhibit space should be requested by application to the Show Chair (application available on the WOS website if not received by e-mail - [www.windsororchidsociety.ca/orchid-show-2023.html](http://www.windsororchidsociety.ca/orchid-show-2023.html) in accordance with the deadlines provided in the invitation.
3. Every reasonable effort will be made to provide the amount of space requested on a first-come, first-served basis. Should available space be less than requested, you will be advised by the Show Committee.
4. **Exhibit setup:** **Friday** 12:00 noon to 9:00 p.m.  
**Registration:** **Friday** 12:00 noon to 8:00 p.m.  
Subsequent entries may be exhibited but not registered and will not be judged. All times noted are Eastern Daylight Time.

We request that all exhibitors be on-site by 6pm, time and space for late arrivals will be compromised otherwise.

5. **Advertised show hours:**  
**Saturday** 11:00 a.m. to 5:00 p.m. Public  
**Sunday** 9:00 a.m. to 11:00 a.m. Photographers  
**Sunday** 11:00 a.m. to 4:00 p.m. Public
6. All exhibits must be left in place until the announcement of the closing of the show on Sunday, October 29. An announcement will be made at 4:00 p.m. for the official closing of the show. Once the remaining visitors have been cleared from the hall, a second announcement will be made to begin takedown.

## EXHIBITION GUIDELINES

7. All exhibitors are expected to familiarize themselves with and abide by the Rules and Regulations in this Show Schedule.
8. Participation in the Show by commercial vendor, society, or individual is by WOS invitation. A letter requesting participation may be sent to the Vendor Liaison Chair, Ed Cott ([laelia@aol.com](mailto:laelia@aol.com)).
9. Each exhibitor agrees upon entry to abide by the rules and regulations of the Show. All questions regarding the interpretation or application of these rules shall be referred to the Show Chair.
10. All exhibits are expected to be of a quality expected of an AOS Orchid Exhibit. The Show Chair reserves the right to remove inferior exhibits or plants, including those with insect infestations. All possible care and precautions will be taken but the WOS will not accept any liability for damages.

11. There are no fees to the exhibitor for entries or assistance in setting up exhibits.
12. Tables for exhibits will be furnished without cost, if requested in advance. All backdrops, cloths for tabletops, lighting, etc. must be furnished by the exhibitor.
13. Foliage plants, moss etc. may compliment exhibits, but no artificial or dyed moss or foliage will be permitted with the exception of artificial grass used as a floor covering.
14. Plants in flower or cut flowers other than orchids will not be permitted in an exhibit. No dyed flowers will be permitted.
15. All lighting is to be provided by the exhibitor. Please request the need for an electrical plug at time of exhibit registration.
16. The WOS will provide all cards and signs displaying exhibitors' names in the main display and exhibit area. No other identification will be permitted except as provided by the vendors in the sales area.
17. No sales tables shall be allowed in the exhibit area. Any plants sold which are part of an exhibit shall not be removed from the exhibit before the official close of show on Sunday.
18. Vendors wishing to sell plants or products during the show must have an exhibit in the show. That exhibit should be worthy of an AOS judged show. Vendors whose exhibits are not of suitable quality may be assessed an additional fee of \$500. All plants sold must be properly labeled with genus and grex.
19. Neither the WOS nor Gethsemane Lutheran Church is responsible for loss or damage to any plants, blooms, containers, or other property of exhibitors. However, precautions will be exercised for their safety.

#### **REGISTRATION AND CLASSIFICATION**

20. Improperly entered plants/exhibits may be either reclassified or disqualified at the discretion of the judges.
21. In general, plants should be entered in the first applicable class. If in doubt, see the Registration Chair and refer to the Mid-America Classification Schedule.
22. There is no limit to the number of plants entered by one exhibitor in any one class.
23. For purposes of this schedule, the word "hybrid" means a cross made within the genus listed, unless preceded by the word "intergeneric", in which case, two or more different genera are used in the cross.

24. The appropriate class for intergeneric hybrids shall be the first class for intergeneric crosses which lists one of the genera making up the hybrid. (See lists of genera belonging to each class at the registration desk).
25. Natural hybrids should be included in species classes.
26. An exhibit cannot be entered in more than one class.
27. Individual plants or cut flowers cannot be entered in more than one class, with the exception of class 109.
28. In determining colour for a class, the following guidelines will be employed:
  - two-tone flowers, or those where a primary base colour is indeterminable, should be entered in the "other colours" classification
  - colour in Paphiopedilum hybrids is based on the dominant colour on the front of the flower
  - colour in Phalaenopsis is based on the dominant colour on the front of the flower
29. Criteria employed in ribbon class definitions refer to characteristics prevailing for mature plants grown according to normal horticultural practices.

#### **ENTRY OF PLANTS AND EXHIBITS**

30. Print legibly on the entry forms.

#### **31. Procedure for entries:**

- Registration of plants is facilitated if entries have been filed online or e-mailed prior to the on-line registration closing time and date. Registration forms will also be available at the Registration desk during registration on Friday.
- On each registration form indicate the CLASS NUMBER for each entry. Check the show schedule for the correct class. It is your responsibility to classify your entries correctly. Incorrect entries may be reclassified or disqualified at the discretion of the Judging Team Captain.
- Under NAME indicate the name of the plant, flower, or exhibit.
- For hybrids, add the parentage if known. Check the OrchidWiz data base, or similar electronic sources. Orchids Plus and OrchidWiz will be available at the entry registration desk.
- If the plant is a species, write "species" in the space for the cross.
- If the plant or meristem/mericlone has been previously awarded by the AOS, the cultivar name and award should also be noted upon registration.
- Obtain an EXHIBIT/EXHIBITOR NUMBER at the registration desk. These numbers should appear on each entry form. They assist the clerks and judges in locating plants and exhibits for judging.

- Return completed entry forms to the entry desk and number the pages, noting the total number of pages also as provided for on the forms (eg. Page 2 of 5).
  - Each entry will be assigned a TAG NUMBER. Once all entries by an exhibitor have been entered, tags will be printed for each entry and are to be placed on the plant, flower or exhibit so that the entry number is clearly visible.
- 32.** This Show has been approved for AOS judging. All flowers, whether registered for ribbon judging or not, will be considered for AOS awards (unless marked “Not for AOS judging” by the exhibitor upon registration).
- If the flowers (same blooming) have been exhibited at another AOS function, they are considered to have been screened and, therefore, are not eligible for further consideration for awards. The entry form for such plants must be marked, "Not for AOS judging". This does not disqualify the flower from consideration in the proper ribbon or trophy class.
- 33.** Submission of plants or cut flowers for judging shall obligate the exhibitor to accept any AOS award granted and to pay any fees connected with such an award except where the exhibitor has clearly indicated before the judging that this entry is not to be AOS judged.

## **JUDGING**

- 34.** Show judging will begin promptly at 8:00 a.m. on Saturday, October 28. A light breakfast (coffee, juice, donuts, bagels) will be provided at 7:15 a.m. Judges and clerks should plan to be on location by 7:45 a.m.
- 35.** Only authorized persons will be permitted in the Show or vendor areas during judging. WOS issued name tags will be provided to identify those authorized. Anyone not properly authorized will be asked to wait outside the Show and Sale hall until the event is open to the public.
- 36.** Judging must comply with the current rules of the American Orchid Society as described in the AOS Handbook on Judging and Exhibition and any interim rules that have been issued by the AOS Judging Committee.
- 37.** Judging teams for ribbon judging may include lay judges at the discretion of the Judging Chair.
- 38.** All judges and clerks are expected to familiarize themselves with the show rules. A clerking handbook is posted on the WOS website and is available for reference.
- 39.** All plants and flowers will be considered for recognition based on present quality, without regard to previous awards. To maintain highly competitive standards, trophies, ribbons or other recognition may be withheld if, in the judges' opinion, the flower, plant or exhibit does not warrant such recognition.
- 40.** Judges may subdivide or add additional classes or awards at their discretion, with notification and approval from the Judging Chair and communicated to the Show Chair and the Registration Chair.

41. First, second and third place ribbons may be awarded to the best three (3) entries in each class other than a trophy class. Additional second and third place ribbons may be offered when, in the opinion of the judges, additional recognition is merited in a class other than a trophy class.
  42. All trophies are open to all exhibitors in this Show if the flower/exhibit is entered properly and Show rules are complied with, unless otherwise specified in this schedule.
  43. In order to be eligible for any special trophies, plants and exhibits must be entered for ribbon judging. No separate entry is required.
  44. All exhibits are eligible for the AOS Show Trophy and will be judged in accordance with the criteria in the current AOS Handbook on Judging and Exhibition.
  45. All entry tags must be removed from all exhibits when judging is complete and before the show is opened to the public. Volunteers will do this if the exhibitor is unavailable. All possible care will be taken but the WOS will not accept any liability for damages.
  46. The Judging Chair, will be asked to select their assessment of the best orchid in the WOS display. The orchid selected must have been previously identified and vouched for by the exhibiting WOS member as having been owned and grown by its exhibitor for at least six (6) months prior to exhibition. This orchid will receive the Canadian Orchid Congress Award for Best orchid in the WOS display. Eligibility will be recorded upon registration to aid in the judging process.
  47. Impartial judges, as determined by the Judging Chair, will be asked to select their assessment of the most artistic display in Show consistent with the theme of the show. All displays are eligible to be considered for this award. The Mario Ferrusi Memorial Trophy will be given to the selected display.
- Pre-registered is encouraged and must be done **by Wednesday, October 25th** and in place at the show venue by **6 p.m. Friday October 27<sup>th</sup>** unless prior arrangements have been made with the **Show Chair, Deb Boersma (debul8ter@outlook.com)**. Send pre-registrations: attention Adele Beitler (windsororchidsociety@gmail.com) and put Plant Registration in the subject area. No entry may be removed from display until the official closing time unless sold during the show. The Chair, or a designate, will oversee any sales of the works displayed.



## SCHEDULE OF CLASSES

### A. Open Competition.

- 001. Display of **10-15** flowering orchid plants or cut inflorescences. Open competition.
- 002. Display of **16-25** flowering orchid plants or cut inflorescences. Open competition.
- 003. Display of **more than 25** flowering orchid plants or cut inflorescences. Open competition.  
*All vendors must enter at least one display in Classes 1 - 3 as per Rule #18*

### B. Orchid Societies affiliated with AOS.

- 004. Display of **5-15** flowering orchid plants or cut inflorescences put on by a visiting Orchid Society.
- 005. Display of **16-25** flowering orchid plants or cut inflorescences put on by a visiting Orchid Society.
- 006. Display of **26 or more** flowering orchid plants or cut inflorescences put on by a visiting Orchid Society.

### C. Educational Exhibit.

- 007. Educational exhibits, not previously exhibited at a WOS show.

### D. Junior or Novice Exhibit.

- 008. Display of orchid plants by a Junior Exhibitor (Exhibitor must be 19 years old or less)
- 009. Display of orchid plants by a novice (Exhibitor has never entered an exhibit in an orchid show).

**BEST OF CLASS AND TROPHY:** *All class grouping A., B. C. and D.*

**CANADIAN ORCHID CONGRESS MEDAL:** *Best orchid in the WOS/SOW display (see Rule # 46).*

**MARIO FERRUSI MEMORIAL TROPHY:** *Most artistic and creative display in keeping with Show theme (see Rule # 47).*

## OPEN COMPETITION

### E. Cattleya Alliance

#### Trophy: Best of Cattleya and Allied Genera (Classes 10-26)

- 010. Encyclia, Epidendrum and Prosthechea species.
- 011. Encyclia, Epidendrum and Prosthechea hybrids and intergenerics, but excluding Cattleya and Guarianthe.
- 012. Brassavola & Rhyncholaelia species, hybrids and intergenerics other than above, but excluding Cattleya and Guarianthe.
- 013. Broughtonia species, hybrids and intergenerics other than above, but excluding Cattleya and Guarianthe.
- 014. Traditional Laelia and Sophronitis species, & hybrids.
- 015. Cattleya and Guarianthe species.
- 016. Species of genera allied to Cattleya other than above.
- 017. Cattleya and Guarianthe hybrids and intergenerics other than above, Lavender/Mauve, flowers 10cm (4 inches) or less.
- 018. Cattleya and Guarianthe hybrids and intergenerics other than above, Lavender/Mauve, flowers larger than 10cm (4 inches).
- 019. Cattleya and Guarianthe hybrids and intergenerics other than above, White.
- 020. Cattleya and Guarianthe hybrids and intergenerics other than above, Semi-alba.
- 021. Cattleya and Guarianthe hybrids and intergenerics other than above, Yellow/Orange, flowers equal to 10cm (4 inches) or less.
- 022. Cattleya and Guarianthe hybrids and intergenerics other than above, Yellow/Orange, flowers larger than 10cm (4 inches).
- 023. Cattleya and Guarianthe hybrids and intergenerics other than above, Red/Red shades, flowers equal to 10 cm (4 inches) or less.

- 023a. Cattleya and Guarianthe hybrids and intergenerics other than above, Red/Red shades, flowers larger than 10cm (4 inches).
- 024. Cattleya and Guarianthe hybrids and intergenerics other than above, Other colors.
- 025. Hybrids & intergenerics of genera allied to Cattleya & Guarianthe, other than above.
- 026. Miniature species, hybrids and intergeneric hybrids of Cattleya & allied genera - (*Note: Total height of plant 25 cm or less excluding inflorescence and not entered in any of the above classes*).

### **F. Cyripedium Alliance**

#### **Trophy: Best Cyripedium Alliance Species or Hybrid (Classes 27 – 43a)**

*Note: Colour in Paphiopedilum hybrids is based on the dominant colour of the flower front.*

- 027. Paphiopedilum species, *Parvisepalum* and *Brachypetalum* sections.
- 028. Paphiopedilum species, *Insigne* and *Barbatum* sections.
- 029. Paphiopedilum species, *Corypetalum* and *Pardalopetalum* sections (multifloral).
- 029a. Paphiopedilum species, *Cochlopetalum* section (sequentially flowering).
- 030. Paphiopedilum hybrids, brachy/parvi hybrids.
- 031. Paphiopedilum hybrids, maudiae or cruciform type, White/Pink/Green/Yellow.
- 032. Paphiopedilum hybrids, maudiae or cruciform type, other colours except vinicolors.
- 033. Paphiopedilum hybrids, multifloral.
- 034. Paphiopedilum hybrids, sequential flowering.
- 035. Paphiopedilum hybrids, full round shape, White/Pink/Green/Yellow.
- 036. Paphiopedilum hybrids, full round shape, other colours except vinicolors.
- 037. Paphiopedilum hybrids, vinicolors.
  
- 040. Phragmipedium species.
- 041. Phragmipedium besseae hybrids.
- 042. Phragmipedium kovachii hybrids
- 043. Phragmipedium other hybrids.
- 043a. Species, hybrids and intergenerics of genera allied to Cyripedium, including Cyripedium, Selenipedium and Mexipedium, other than above

### **G. Vanda Alliance**

#### **a. Phalaenopsis Alliance**

#### **Trophy: Best Phalaenopsis / Doritis (Class 44-58)**

*Note: Multiflora refers to flowers 8 cm or less, with expected multi-branched inflorescences when mature.*

*Note: Colour in Phalaenopsis is based on the dominant colour of the flower front.*

- 044. Phalaenopsis species, including those species formerly known as Doritis
- 045. Phalaenopsis hybrids – White –no markings.
- 046. Phalaenopsis hybrids – White - with coloured lip, no markings
- 047. Phalaenopsis hybrids – White – with markings
- 048. Phalaenopsis hybrids – White – multifloral, with or without markings
- 049. Phalaenopsis hybrids – Pink –no markings.
- 050. Phalaenopsis hybrids – Pink – with markings
- 051. Phalaenopsis hybrids – Pink – multifloral, with or without markings
- 052. Phalaenopsis hybrids – Yellow–no markings.
- 053. Phalaenopsis hybrids – Yellow – with markings
- 054. Phalaenopsis hybrids – Yellow – multifloral, with or without markings

- 055. Phalaenopsis hybrids – Other colours –no markings.
- 056. Phalaenopsis hybrids – Other colours – with markings
- 057. Phalaenopsis hybrids – Other colours – multifloral, with or without markings
- 058. Phalaenopsis hybrids – Blushes.

**b. Vanda Alliance (non Phalaenopsis)**  
**Trophy: Best of Vanda Alliance (Classes 59-74)**

- 059. Aerangis species, hybrids and intergenerics.
- 060. Angraecum, Aeranthes, species, hybrids and intergenerics other than above
- 061. Vanda species formerly known as Neofinetia
- 062. Vanda species other than above.
- 063. Vanda hybrids, Orange/Yellow, flowers 3.5cm (1 ½ inches) or less.
- 064. Vanda hybrids, Orange/Yellow, flowers larger than 3.5cm (1 ½ inches).
- 065. Vanda hybrids, Red/Pink, flowers 3.5cm (1 ½ inches) or less.
- 066. Vanda hybrids, Red/Pink, flowers larger than 3.5cm (1 ½ inches).
- 067. Vanda hybrids, Blue/Purple, flowers 3.5cm (1 ½ inches) or less.
- 068. Vanda hybrids, Blue/Purple, flowers larger than 3.5cm (1 ½ inches).
- 069. Vanda hybrids, Other colors, flowers 3.5cm (1 ½ inches) or less.
- 070. Vanda hybrids, Other colors, flowers larger than 3.5cm (1 ½ inches).
- 071. Rhynchostylis species, hybrids and intergenerics other than above.
- 072. Renanthera and Aerides species, hybrids and intergenerics other than above.
- 073. Species of genera allied to Vanda other than above.
- 074. Hybrids and intergenerics allied to Vanda other than above.

**H. Oncidium Alliance**  
**Trophy: Best Oncidium (Class 75-83)**

- 075. Brassia species, hybrids and intergenerics.
- 076. Miltonia/Miltoniopsis species & hybrids.
- 077. Miltonia/Miltoniopsis intergenerics other than above.
- 078. Oncidium species
- 079. Oncidium hybrids
- 080. Tolumnia (equitant Oncidium) species and hybrids.
- 081. Oncidium intergenerics other than above.
- 082. Traditional Odontoglossum species, hybrids and intergenerics. These involve Odm. crispum and Odm. nobile species producing the classic Odontoglossum shape.
- 083. Species, hybrids, and intergenerics of genera allied to Oncidium other than above.

**I. Cymbidium Alliance**  
**Trophy: Best Cymbidium Alliance (Classes 84 - 86)**

- 084. Cymbidium hybrids, flowers equal to or less than 7.5cm (3 inches)
- 085. Cymbidium hybrids, flowers more than 7.5cm (3 inches).
- 086. Cymbidium species, allied genera species, hybrids and intergenerics, other than above.

**J. Dendrobium Alliance**  
**Trophy: Best Dendrobium Alliance (Classes 87 – 95)**

- 087. Dendrobium species, nobile type.
- 088. Dendrobium species, phalaenopsis and antelope types.
- 089. Dendrobium species, latouria types
- 090. Dendrobium species, other types.
- 091. Dendrobium hybrids, nobile type.
- 092. Dendrobium hybrids, phalaenopsis and antelope types.
- 093. Dendrobium hybrids, latouria type
- 094. Dendrobium hybrids, other types.
- 095. Species, hybrids and intergenerics of genera allied to Dendrobium other than above.

**K. Miscellaneous Genera**

**Trophy: Best Misc. Genera (Classes 96 – 107)**

- 096. Masdevallia and Dracula species.
- 097. Masdevallia and Dracula hybrids and intergenerics.
- 098. Pleurothallis species, hybrids and intergenerics other than above.
- 099. Pleurothallis allied genera, species, hybrids and intergenerics other than above.
- 100. Lycaste, Ida (Sudamerlycaste), Anguloa species, hybrids and intergenerics.
- 101. Maxillaria and allied genera, species, hybrids and intergenerics other than above.
- 102. Species, hybrids and intergenerics of Zygopetalum & allied genera other than above.
- 103. Species, hybrids and intergenerics of Catasetum, Cynoches, Mormodes and allied genera.
- 104. Bulbophyllum and allied genera, species, hybrids and intergenerics.
- 105. Orchid species and hybrids grown for unusual foliage with or without flowers
- 106. Orchid species not covered elsewhere.
- 107. Orchid hybrids and intergenerics not covered elsewhere.

**Trophy: Best orchid flowering for the first time (Class 108)**

- 108. Seedlings flowering for the first time. *Only plants not entered elsewhere are eligible.*

**Trophy: Best Specimen Plant (Class 109)**

- 109. Specimen plants.  
*Note: Plants in this class may also be entered in the appropriate class above.*

**Trophy: BEST PLANT IN SHOW (Classes 10 – 109)**

## **TROPHIES and AWARDS**

**American Orchid Society Awards: FCC, AM, HCC, CCM, and others may be given to qualifying entries.**

**AOS SHOW TROPHY:** *Awarded under the provisions of the judging handbook for the best display in the show.*

**CANADIAN ORCHID CONGRESS Trophy:** **Best orchid in the WOS/SOW display** (see Rule # 46).

**MARIO FERRUSI MEMORIAL TROPHY:** **Most artistic and creative display in Show** (see Rule # 47)

*Display of flowering orchids, Trophy awarded to*

*Best Exhibit Overall* Classes 1-9

*Best Cattleya* Classes 10-26

*Best Cypripedium Alliance* Classes 27- 43a

*Best Phalaenopsis* Classes 44 – 58

*Best Vandaceous* Classes 59 – 74

*Best Oncidium* Classes 75 – 83

*Best Cymbidium* Classes 84 – 86

*Best Dendrobium* Classes 87 - 95

*Best Miscellaneous Genera* Classes 96 – 107

*Best Orchid Flowering for First Time* Classes 108

*Best Specimen Plant* Class 109

*Best Plant in Show* Classes 10 - 109